

PROJECT DATA

PROJECT: MADISON BUSINESS PARK
OWNER: SOUTHERN BELL TELEPHONE COMPANY
ARCHITECT: CONGLETON ARCHITECT AIA
DATE: 12/15/88
LOT: 10
ACRES: 4.41
BLDG. AREA: 100,000
PARKING: 1,000
USE: OFFICE

LOT #	AREA (SQ. FT.)	ALLOWED	PROPOSED
1	1,410	1,410	1,410
2	1,410	1,410	1,410
3	1,410	1,410	1,410
4	1,410	1,410	1,410
5	1,410	1,410	1,410
6	1,410	1,410	1,410
7	1,410	1,410	1,410
8	1,410	1,410	1,410
9	1,410	1,410	1,410
10	1,410	1,410	1,410

SITE PLAN

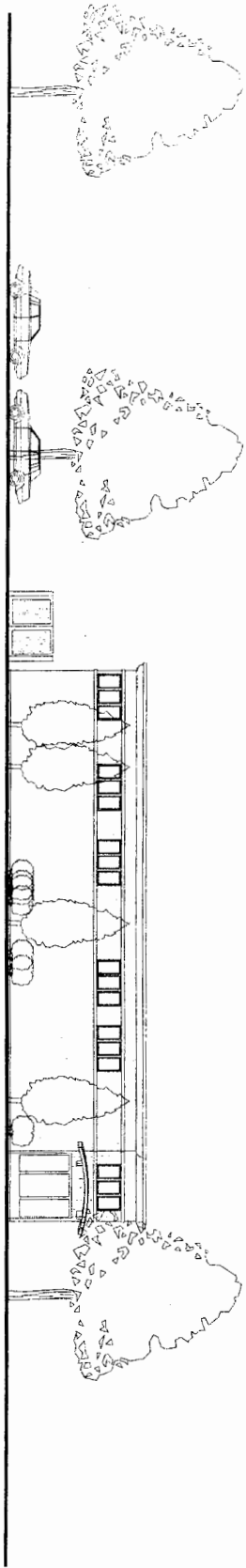
LOT #	AREA (SQ. FT.)	ALLOWED	PROPOSED
1	1,410	1,410	1,410
2	1,410	1,410	1,410
3	1,410	1,410	1,410
4	1,410	1,410	1,410
5	1,410	1,410	1,410
6	1,410	1,410	1,410
7	1,410	1,410	1,410
8	1,410	1,410	1,410
9	1,410	1,410	1,410
10	1,410	1,410	1,410



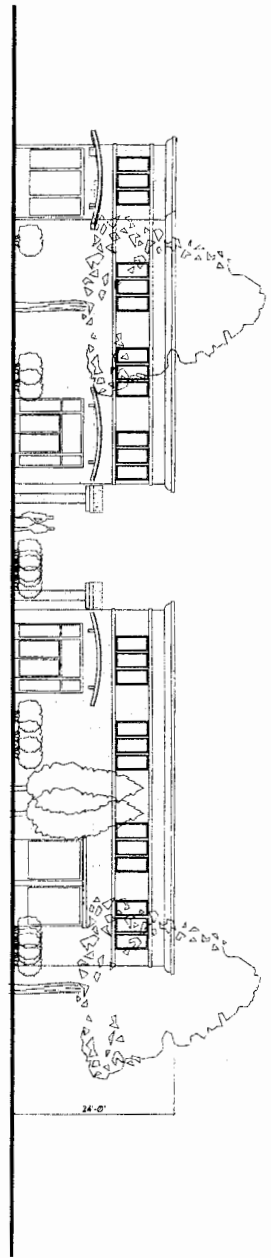
MADISON BUSINESS PARK
 122-122 MADISON LANE, DALYSPR (BOWDOEN AREA/MONTGOMERY COUNTY)

Congleton Architect AIA
 Post Office Box 476 Carroll, GA 30601 (229) 826-6222 License No. C-9028





SIDE ELEVATION - E' & F'



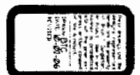
FRONT ELEVATION - E' & F'



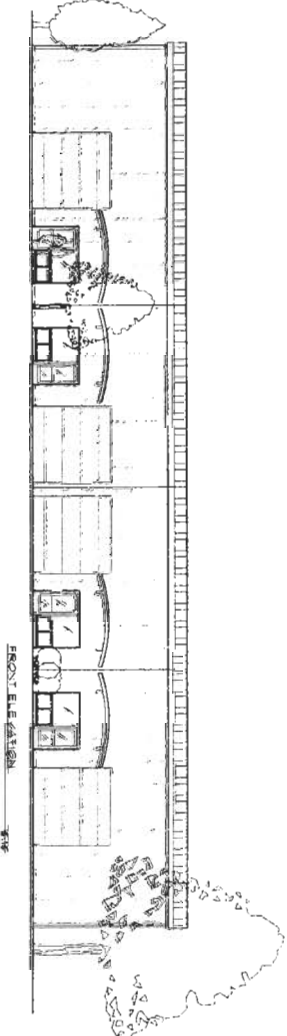
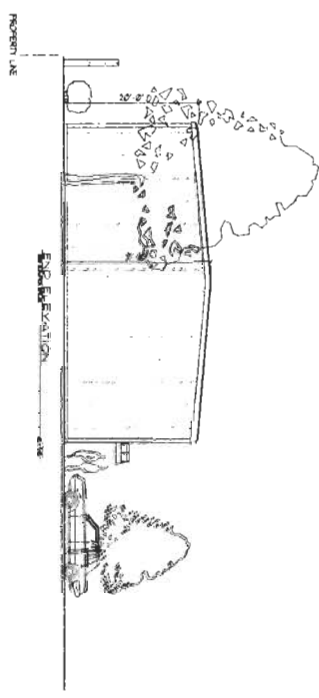
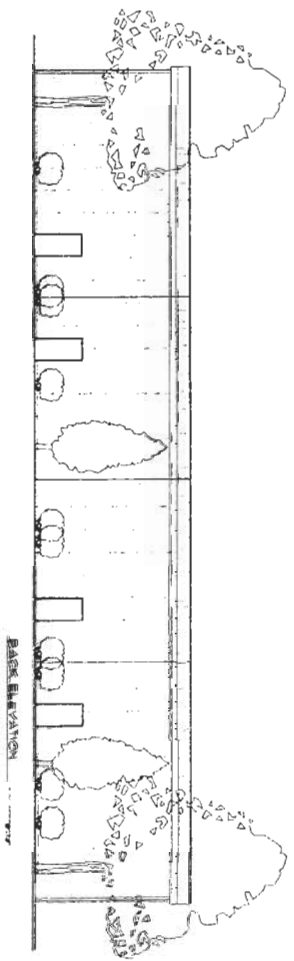
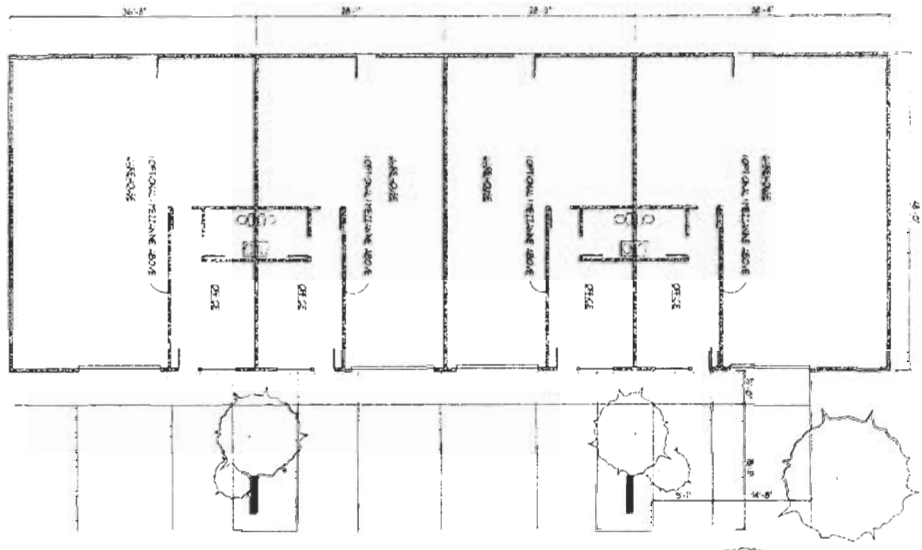
MADISON BUSINESS PARK
192-196 MADISON LANE, SALINAS CALIFORNIA

Congleton Architect AIA

Post Office Box 418 Carmel, CA 93921 (831) 626-9528 License No. C-90130



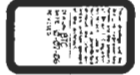
FLOOR PLAN A
 1/4" = 1'-0" DISTANCE



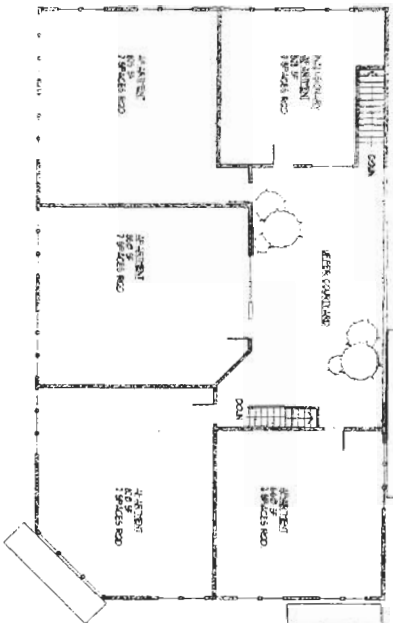
MADISON BUSINESS PARK
 122-126 MADISON LANE - SALINAS, CA

Congleton Architect AIA

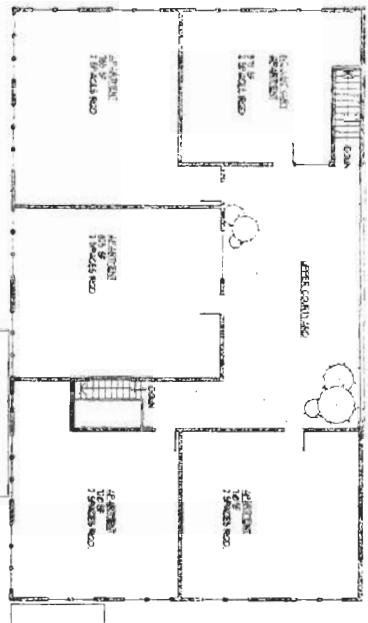
Post Office Box 419 Corral, CA 93821 (831) 836-8228 License No. C-9030



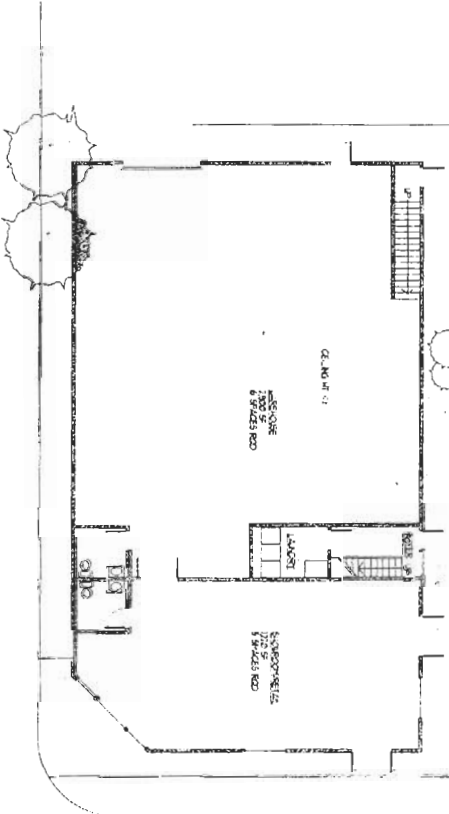
SECOND FLOOR 'E'
18' x 11' 0"



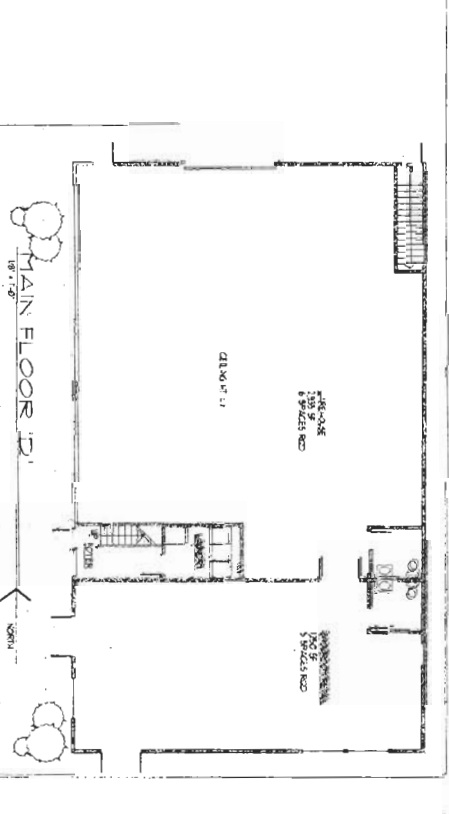
SECOND FLOOR 'D'
18' x 11' 0"



MAIN FLOOR 'E'
18' x 11' 0"



MAIN FLOOR 'D'
18' x 11' 0"



MADISON BUSINESS PARK
1522-1526 MADISON LANE, SALINAS CALIFORNIA

Congleton Architect AIA

Pool Office Box 418 Carmel, CA 95021 (831) 625-9225 License No. C-9030

