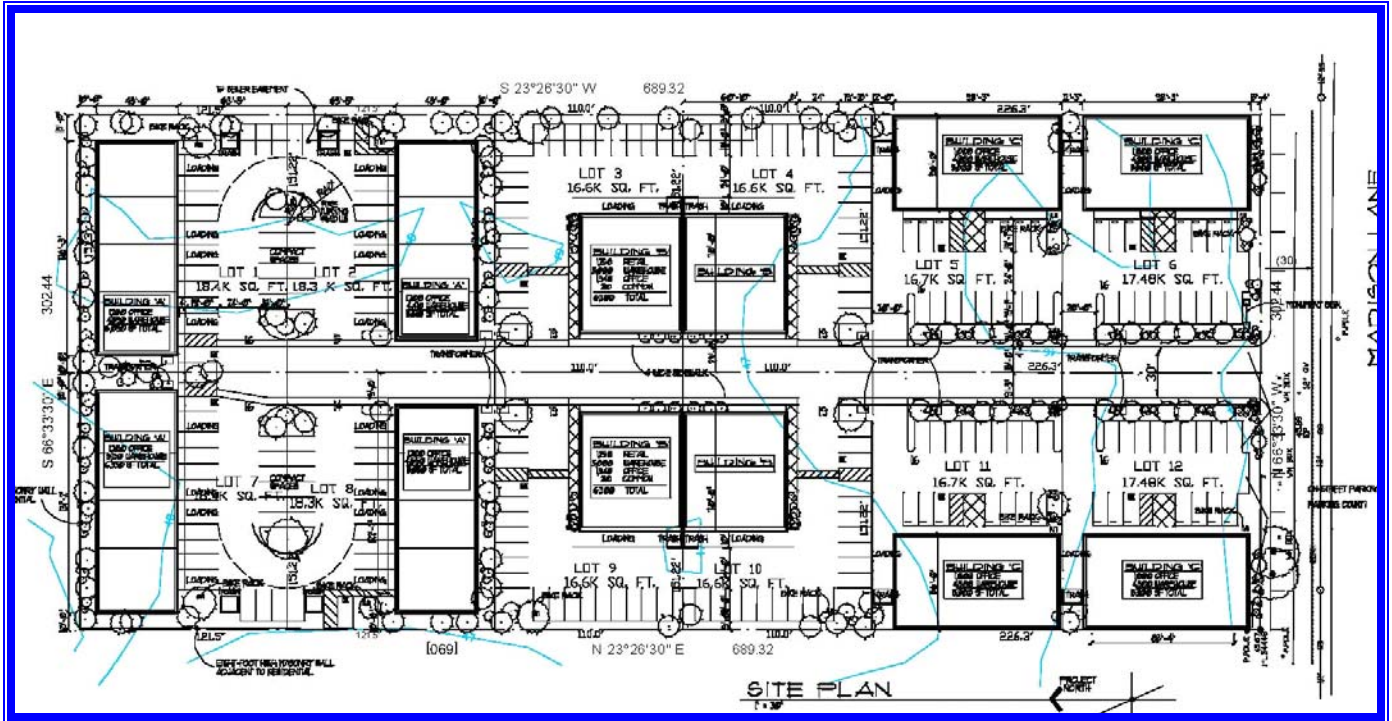


JNM COMPANY

Commercial Real Estate
MADISON BUSINESS PARK

MIXED-USE LAND FOR SALE



12 LOT LIGHT COMMERCIAL-Limited RETAIL CENTER

Offering:	Land For Sale or Build-to-Suit	Lots	Lot Size	Price	Building Size
Project Name:	Madison Business Park		(SF)	(\$)	(SF)
Street Address:	1132 Madison Lane	1	18,400	N/A	6,090
Location:	Salinas, Monterey County	2	18,300	N/A	5,610
Cross Street:	2 nd NE Boronda Road, Boronda Area:	3	16,600	\$415,000	6,300
	Boronda Redevelopment Area	4	16,600	\$450,000	6,300
Existing Zoning:	Heavy Commercial (Urban Reserve)	5	16,700	\$510,000	5,500
Project Status	Approved Development Plan #PLN060112	6	17,480	\$550,000	5,500
APN:	261-041-027	7	18,400	N/A	6,330
Project Type:	Mixed-Use (Commercial – Office, Warehouse, Showroom, Light Commercial)	8	18,300	N/A	5,850
Available:	Spring 2009	9	16,600	\$415,000	6,300
Proposed Uses:	Retail/Showroom Sales, Wholesale, Warehouse, Mini-Warehouse, Offices, Shops for Tradesman, Contractor Yards, Offices and Storage, Other uses of similar character	10	16,600	\$450,000	6,300
		11	16,700	\$510,000	5,500
		12	17,480	\$550,000	5,500

For Additional Information, Please Contact: John McCormack

JNM COMPANY

Phone (831) 625-1414 • Fax (831) 626-0135

johnmccormackjr@montereybay.com

www.jnmcommercial.com

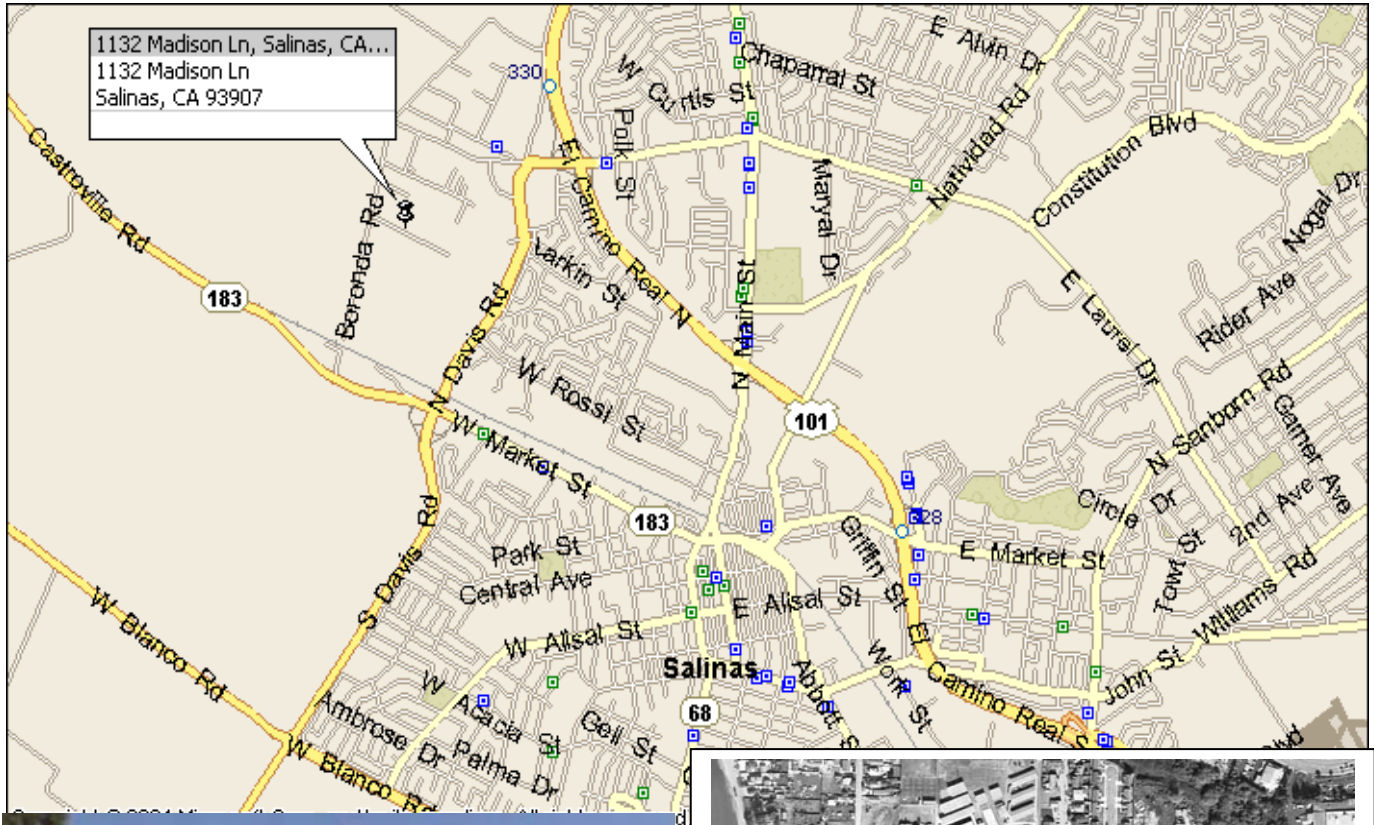


JNM Company

Mixed-Use Sub-Division Land For Sale

MADISON BUSINESS PARK

1132 Madison Lane, Salinas



For Additional Information, Please Contact: John McCormack

JNM COMPANY

Phone (831) 625-1414 • Fax (831) 626-0135

johnmccormackjr@montereybay.com

www.jnmcommercial.com

JNM COMPANY

Commercial Real Estate

MADISON BUSINESS PARK SALINAS, MONTEREY COUNTY



DISCLAIMER and DISCLOSURE

This brochure has been prepared to provide summary information to prospective buyers and to establish a preliminary level of interest in the property. Prospective purchasers should perform their own investigations and research. The Listing Broker makes no warranty or representation with respect to the financial condition or business prospects of any tenant, or any tenant's plans or intentions to continue to occupy the subject property. The information contained in this brochure has been obtained from sources we believe to be reliable, however, Listing Broker has not conducted any investigation regarding these matters and makes no warranty or representation whatsoever regarding the accuracy or completeness of the information provided.

Any oral or written representations by Seller or Broker regarding age of improvements, size and square footage of parcel or building(s), or location of property lines may not be accurate. Apparent boundary line indicators such as fences, hedges, walls or other barriers may not represent the true boundary lines, only a surveyor can determine the actual boundary lines. Buyer should consider investigating the property independently.



Exclusive Listing Agent
JNM Company – Commercial Real Estate
John McCormack
831.915.3638