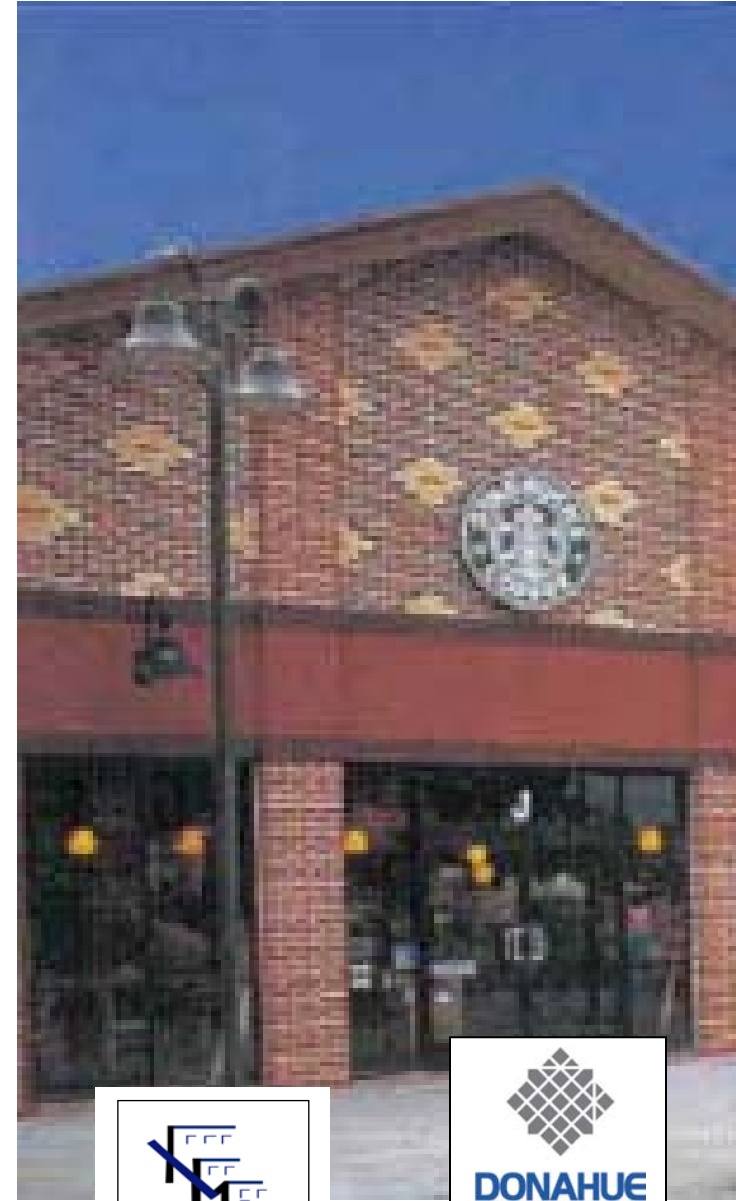


# PORTOLA VILLAGE - 2002 Portola Ave, Ste C

North Livermore Avenue & Portola Avenue, Livermore, California

For Lease  
Shop & Pad  
Space Available



JNM Company  
Commercial Real Estate

John McCormack  
877 687-0459

[johnmccormackjr@montereybay.com](mailto:johnmccormackjr@montereybay.com)  
[www.jnmcommercial.com](http://www.jnmcommercial.com)

The above information has been obtained from sources we deem reliable, but make no representations or warranties, expressed or implied, as to the accuracy of the information. References to square footage or age are approximate. We make no representations or warranties that the premises are free of environmental hazards or suitable in all respects to your contemplated use.

